

IWD FIBRE CEMENT BOARD

PURPOSE

IWD supplies IWD Fibre cement board (Superflex and Flexabord) for use in the following applications:

Superflex

- as an interior wall and ceiling lining, including in wet areas; as a substrate for ceramic tiles and in locations requiring fire or acoustic rating
- as an external lining for soffits and eaves where there will be no direct impact from the weather.

Flexabord

- as an interior wall and ceiling lining, including in wet areas.

EXPLANATION

IWD Fibre cement board is lightweight fibre cement flat board manufactured using an autoclave from Portland cement, crystalline silica, fly ash and cellulose pulp.

Superflex is a smooth flat board, creamy white in colour with a square edge, supplied in the following sizes:

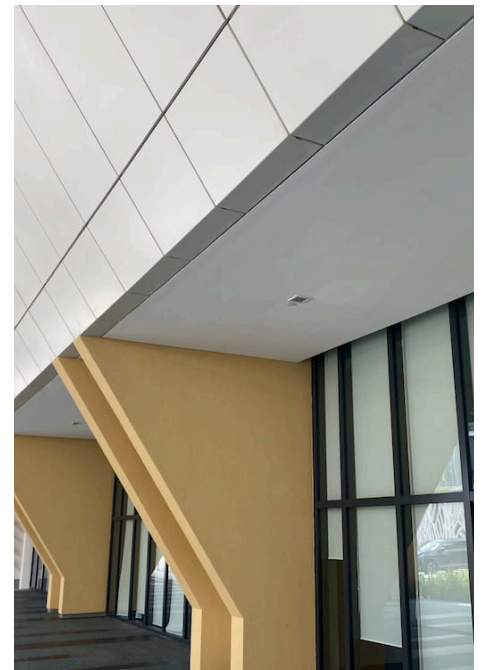
Thickness (mm)	Weight (kg/m ²)	Length (m)	Width (m)					
			300	450	600	750	900	1200
4.5	1.16	2400	Y	Y	Y	Y	Y	Y
6.0	1.58	2400						Y
9.0	2.45	2400						Y

It is defined as non-combustible in accordance with EN 13501-1.

Flexabord is unsanded flat board, pinkish in colour with recessed edges. The board is 9 mm thick, 2.45 kg/m² in weight and 2400 x 1200 (l x w, mm).

SCOPE AND LIMITATIONS OF USE

Scope	Limitations
Location In wind zones, up to and including extra high, as defined in NZS 3604:2011 or to a designed wind pressure (ULS) of 2.1 kPa. In all exposure zones as defined in section 4, NZS 3604:2011.	<ul style="list-style-type: none"> ➤ All fixings must comply with E2/AS1 (Table 20 and 21) and the appropriate exposure zones as defined in NZS 3604:2011, section 4. ➤ Where adverse microclimatic conditions apply, as set out in paragraph 4.2.4, contact IWD for technical advice. ➤ Where installed within 1 m of a relevant boundary, the balance of the roof, eave and wall structure must meet the relevant fire-related building code obligations.
Any proximity to the relevant boundary (Superflex).	
Building In conjunction with a primary structure that complies with the NZ Building Code or where the designer or installer have satisfied themselves that the existing structure is suitable for the intended building work. As an external lining (Superflex only).	<ul style="list-style-type: none"> ➤ The boards may only be used in areas protected from the weather. ➤ Where used in corrosive zones, fixings must be to Table 20, E2/AS1. ➤ Where subject to water splash, Superflex and Flexabord must be coated with a protective layer that is impervious to moisture.
As an internal lining.	



For further assistance please contact:

- ☎ 09 963 1880
- ✉ sales@iwd.co.nz
- 🌐 iwd.co.nz

USEFUL INFORMATION

For design, installation and maintenance information, refer to iwd.co.nz.

OTHER CERTIFICATIONS AND APPROVALS HELD BY THE MANUFACTURER

- ISO 9001:2015 [SIRIM QAS International, 22/07/2019].
- Singapore Green Labelling Scheme (SGLS) certified [Singapore GreenLabel, 20/09/2020].

PERFORMANCE CLAIMS

If designed, installed and maintained in accordance with all IWD requirements, IWD Fibre Cement Board will comply with or contribute to compliance with the following performance claims:

NZ Building Code clauses	BASIS OF COMPLIANCE	
	Compliance statement	Demonstrated by
B1 Structure B1.3.1, B1.3.2, B1.3.3 (a, h, j, m & q), B1.3.4 (a, b, c, d)	ALTERNATIVE SOLUTION	<ul style="list-style-type: none"> Manufactured to AS/NZS 2908.2:2000 [SIRIM QAS International, 15/09/2021]. Certified for strength and stability [BBA, 04/04/2019, 28/08/2019].
B2 Durability B2.3.1 (b)	ALTERNATIVE SOLUTION	<ul style="list-style-type: none"> Manufactured to AS/NZS 2908.2:2000 [SIRIM QAS International, 15/09/2021]. Certified for durability [BBA, 04/04/2019, 28/08/2019]. Tested to MS 133:Pt.G6:1978 for fungal growth resistance [SIRIM Berhad, 10/1996].
C3 Fire affecting areas beyond the source C3.7 (a) (UCO Superflex only)	ALTERNATIVE SOLUTION	<ul style="list-style-type: none"> Tested to BS 476-6 and BS 476-7 and classified as A2, s1, d0 in accordance with EN 13501-1:2007. A1 classified materials under EN 13501.1:2018 are considered non-combustible in C/VM2 and the criteria for the previous version of the standard are not appreciably different [BBA, 04/04/2019].
E2 External moisture E2.3.2 (UCO Superflex only) E2.3.3, E2.3.4, E2.3.5, E2.3.7 (a, b, & c)	ACCEPTABLE SOLUTION E2/AS1 ALTERNATIVE SOLUTION	<ul style="list-style-type: none"> Manufactured to AS/NZS 2908.2:2000 [SIRIM QAS International, 15/09/2021]. Certified for moisture resistance [BBA, 04/04/2019, 28/08/2019].
F2 Hazardous Building Materials F2.3.1	ALTERNATIVE SOLUTION	<ul style="list-style-type: none"> Manufactured to AS/NZS 2908.2:2000 [SIRIM QAS International, 15/09/2021]. Tested and confirmed as asbestos free [SIRIM Berhad, 18/10/2016].
G6 Airborne and Impact Sound G6.3.1	ALTERNATIVE SOLUTION	<ul style="list-style-type: none"> Sound absorption tested to ASTM E C423-90a [SIRIM QAS International, 24/12/2003].
H1 Energy Efficiency H1.3.1 (UCO Flexabord only)	ALTERNATIVE SOLUTION	<ul style="list-style-type: none"> Thermal transmission properties tested to ISO 8990:1994 [SIRIM QAS International, 12/05/2008].

SOURCES OF INFORMATION

- ▶ SIRIM QAS International. [22/07/2019] *ISO 9001:2015*. Cert No. QMS 00199.
- ▶ SIRIM QAS International. [15/09/2021] Licence No: PC001411.
- ▶ SIRIM Berhad. [18/10/2016] *Asbestos Analysis*. Report No. ER16096.
- ▶ SIRIM QAS International. [24/12/2003] *ASTM E C423-90a*. Report No. 2003CB1251.
- ▶ SIRIM QAS International. [12/05/2008] *ISO 8990:1994*. Report No. 2008CB0750.
- ▶ SIRIM Berhad. [10/1996] ANALYSIS "RESISTANCE TO FUNGAL GROWTH". Report No. KL960382.
- ▶ BBA. [04/04/2019] *Fibre-cement wall boards UCO Superflex*. Product Sheet 1 19/5636.
- ▶ BBA. [28/08/2019] *Fibre-cement wall boards UCO Flexabord, UCO Vistabord and UCO Multiflex*. Product Sheet 2 19/5636.
- ▶ Singapore GreenLabel. [20/09/2020] *UCO Fiber Cement Board Made from Recycled Material*. Cert. No. 041-036-1219.

SCAN OR CLICK THIS QR CODE TO ACCESS OR REQUEST THE RELEVANT SUPPORTING DOCUMENTATION FOR THIS PASS™.

iwd.co.nz



- Where a standard is referenced it is to be read as amended by the acceptable solution or verification method as applicable.
- Sources of information also include the Building Act 2004 and its regulations, including the Building Code (Schedule 1 of the Building Regulations 1992), Acceptable Solutions and Verification Methods, and relevant cited standards.
- The product is not subject to a warning or ban under section 26 of the Building Act.
- For overseas manufacturer details, where applicable, refer to the company that is the holder of this pass™.
- The quality and assurance that the supplied products meet the performance claims stated in this pass™ are the responsibility of the company that is the holder of this pass™.
- The availability of the information about the supplied products required to be disclosed under s14G(3) is the responsibility of the company that is the holder of this pass™.

Independent Wholesale Distribution Ltd (IWD) confirms that if IWD Fibre cement board is used in accordance with the requirements of this pass™ the product will comply with the NZ Building Code and other performance claims set out in this pass™ and the company has met all of its obligations under s14G(2) of the Building Act.

Date of first issue: 19/05/2022

Date of current issue: 26/09/2023

NZBN: 9429045938849

Kevin Brunton

Kevin Brunton, Technical Director, TBB confirms that the process used to prepare this pass™ on behalf of Independent Wholesale Distribution Ltd (IWD) has been undertaken in accordance with MBIE PTS guidelines and in accordance with the TBB pass™ process which is within the scope of TBB's ISO 9001 certification.

9606D66ADE51EA6CCC25850D00239F99

33 Bath Street, Level 2, Parnell, Auckland, 1052 ▶ sales@iwd.co.nz ▶ 09 963 1880 ▶ iwd.co.nz

Copyright © 2017, The Building Business Limited (TBB). All rights reserved.